

Software Update: Update Pack 2.0UR (UP2.0UR)

Quick Details

File Name: Update Pack 2.0UR
 Date Published: March 11th, 2009
 Download Size: 249MB

Overview

Update Pack 2.0UR provides the software updates including enhanced Navigation application ver. 2.0-UR with new *Local Search from Google Maps* feature. Other key changes are as follows.

	Version Before Change	Version After Change	Changes from System Software ver.1.01
Navigation	4.5.99.4	2.0-UR	<ul style="list-style-type: none"> Supports the new <i>Local Search from Google Maps</i> feature Offers improved user interface layout for easier access to tools, destinations, and settings from the Navigation screen
Browser	-	-	<ul style="list-style-type: none"> Improved display for movies, music and PDF files.
Contacts	-	-	<ul style="list-style-type: none"> Improved design and simplified layout
Control Panel	-	-	<ul style="list-style-type: none"> Support for <i>Mobile Mode Home Screen</i> menu. <i>Daylight Saving Time</i> option to the <i>Date and Time</i> menu. Added <i>Adjust by GPS data</i> option to the <i>Date and Time</i> menu. Enabled <i>Mode Select by</i> in the <i>LCD Brightness</i> menu.
Files	-	-	<ul style="list-style-type: none"> Added feature to allow multiple file selection function in the File Manager.
Portal Sync	-	-	<ul style="list-style-type: none"> Supports time adjustment function via the portal server when Portal Sync is activated.
Weather	-	-	<ul style="list-style-type: none"> Supports both Celsius and Fahrenheit indications.
Common/ Others	-	-	<ul style="list-style-type: none"> Improved design of some buttons. Added support for the ClarionMiND Car Dock NK1U(*1). <p>*1: To be released in April 2009</p>

- For further details, please refer to Owner's Manual at <http://my.clarion.com/en-us/html/support>
- Maps application will be removed on installation of UP2.0UR.
- You cannot uninstall UP2.0UR once you install it.

Software Update Requirements

- A WiFi connection is necessary to execute the software update.
- For information on connecting ClarionMiND to WiFi please refer to the Owner's Manual Chapter 3 (Connecting a network).
- User registration/product registration is necessary to use Portal Sync.
- For registration information please refer to the Owner's Manual Chapter 4 (Registering on the Clarion Portal Site).

Instructions

Before starting the installation:

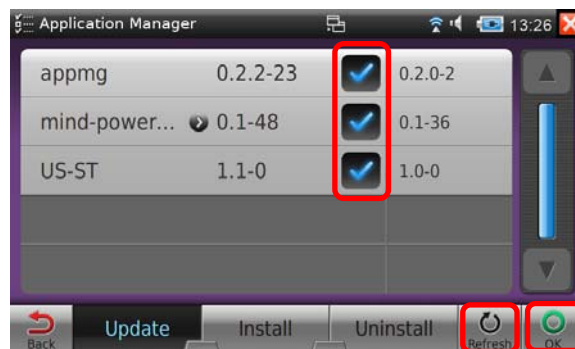
- Plug in the AC adaptor (charger).
- Connect ClarionMiND to a WiFi network.
*Please refer to Chapter 3 Connecting to a Network in the Owner's Manual.
- Close all programs that are running.

1. Tap the Portal Sync Key on the Home Screen to start Portal Sync. Tap [GO] button for Software Update to start Application Manager.

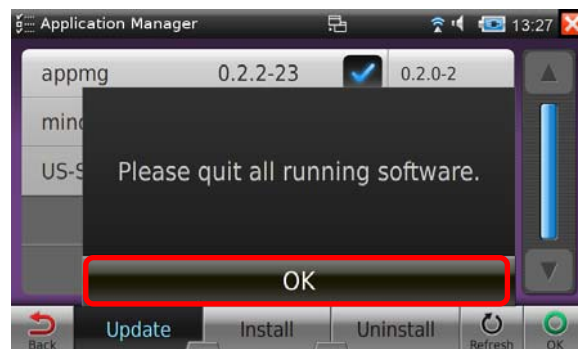


* If you have not signed up for MyClarion and registered your ClarionMiND, you will see the Registration Screen when starting Portal Sync. Please register first and then perform the software update. Please refer to the Owner's Manual Chapter 4 (Registering on the Clarion Portal Site).

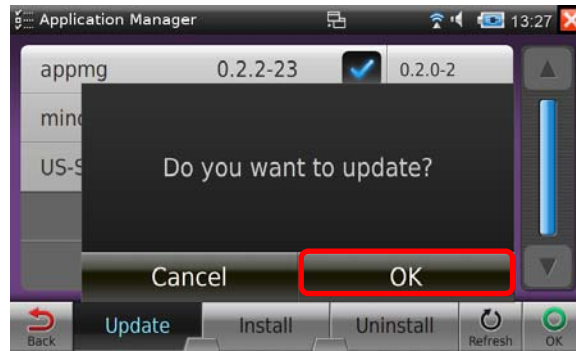
2. On the Application Manager select the [Update] tab if not already selected. Tap the [Refresh] button and then select each of the software updates. After all files are selected tap [OK].



3. Tap [OK] after quitting all running software.



4. Tap [OK] to update.

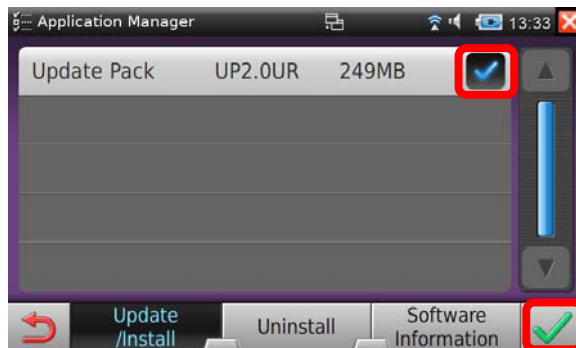


Application Manager update starts. Application Manager will automatically restart after the update is completed.

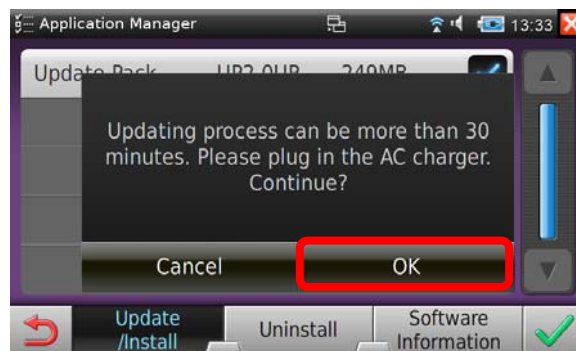


- * Please do not turn the power off during the update.
- * It may take up to 2 minutes to retrieve the software information.

5. After the restart of Application Manager, the [Update/Install] menu is displayed. Verify that the Update Pack UP2.0UR is selected, then tap [OK].



6. Tap [OK] to continue.



- * Updating can be more than 30 minutes for the installation of Update Pack 2.0UR to complete, varying by the speed of internet connection you subscribe and the condition of the connection.

Update will be started. The system will automatically restart after the installation is completed.

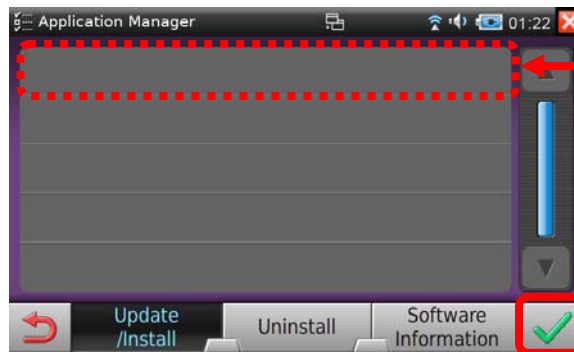
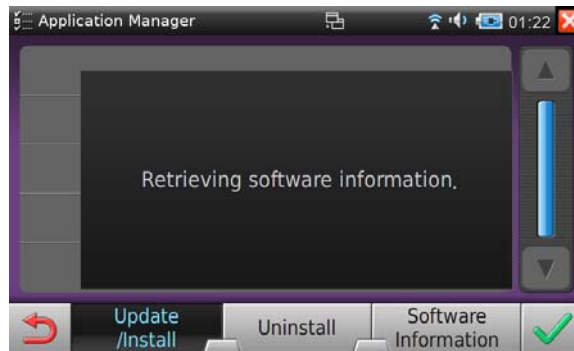


NOTE:

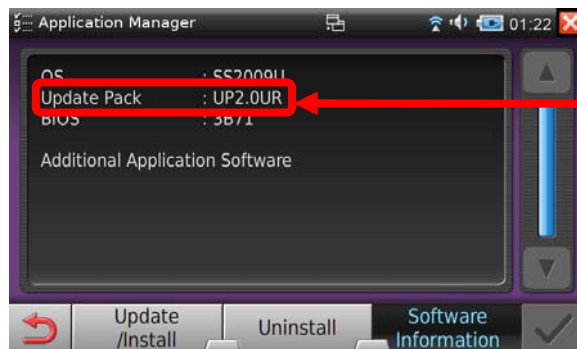
- Please do not turn the power off while updating.
- Update pack (UP2.0UR) includes several large data files. Progress bar may slow or stop while downloading large files.

7. After the update and the system has restarted the Home Screen will appear. To confirm the update has completed successfully, launch the Application manager located in the Control Panel on Advanced Settings to confirm the version of the Update Pack is installed as follows.

Launching Application Manager



Nothing will appear here when update has been completed successfully.



UP2.0UR will appear here when update has been completed successfully.

* Version of Update Pack can be also confirmed from Control Panel - Advanced Settings - System information - Software

8. Quit the Application Manager.

NOTE:

- After the installation of the Update Pack, the date and time may be changed. Date and time may be set manually or set automatically by initiating Portal Sync or setting the Adjust by GPS Data setting on the Date and Time screen.
- Please refer to Owner's Manual, chapter 7-3 (Date and Time) for more information about setting the date and time.
- Once the Update Pack is installed it cannot be removed.
- The version of the OS and the Update Pack can be confirmed from Control Panel – Advanced Settings - System Information - Software.

Troubleshooting

- If the software update fails to complete due to a network problem or power off during the updating process please begin the software update process again.
- If the message "Errors were encountered while downloading packages." appeared and the software update failed to complete, please refer to Owner's Manual chapter 7-12 (Maintenance: Recover RPM database) and then try the update again.

NR1U Software Update UP2.0UR

Change Navigation Settings Instructions

Note:

When the update procedure for the NR1U has completed. There were a few Navigation Settings that will need to be changed. The following steps will correct the Navigation Map Display and the Keyboard Characters.

Problems Occurred after Update:

Navigation Map:

After the update is completed and the Navigation feature is used, you will notice that some of the icons on the map are not in their correct place.

Navigation Keyboard:

When using the Keyboard in Navigation to enter a destination address, you will notice that the characters are not in English. They are in Cyrillic.

Solution:

With the NR1U "ON", select Navigation.

When in Navigation touch the "MENU" Icon on the lower left side of the screen.

Then select "SETTINGS" > "LANGUAGE SETTINGS" > Change the "Language" to "US ENGLISH" > Change the "Keyboard selection" to "ENGLISH".

Now, touch the Back Button on the lower left side of the screen, Select "Display" > Change the "Map display" to "Map Only".

After these changes have been made touch the Back Button on the lower left side of the screen Two Times. You are now back in Navigation and the map is displayed correctly.