

# Software Release: Music Sync / Traffic

## Quick Details

[ Music Sync ]

File Name: MusicSync 1.0-UR  
Date Published: April 23<sup>rd</sup>, 2009  
Download Size: 576KB

[ Traffic ]

File Name: Traffic 1.0-UR  
Date Published: May 7<sup>th</sup>, 2009  
Download Size: 365KB

## Overview

[ Music Sync ]

New release of *Music Sync* application.

	Version Before Change	Version After Change	Changes
Music Sync	-	1.0-UR	• New Release

[ Traffic ]

New release of *Traffic* application.

	Version Before Change	Version After Change	Changes
Traffic	-	1.0-UR	• New Release

- For further details and how to use, please refer to Owner's Manual at <http://my.clarion.com/en-us/html/support>.
- You can uninstall this software after you install it.

## Software Installation Requirements

- A Wi-Fi connection is necessary to execute the software update.
- For information on connecting ClarionMiND to Wi-Fi please refer to the Owner's Manual Chapter 3 (Connecting to a network).
- User registration/product registration is necessary to use Portal Sync.
- For registration information please refer to the Owner's Manual Chapter 4 (Registering on the Clarion Portal Site).

## Instructions

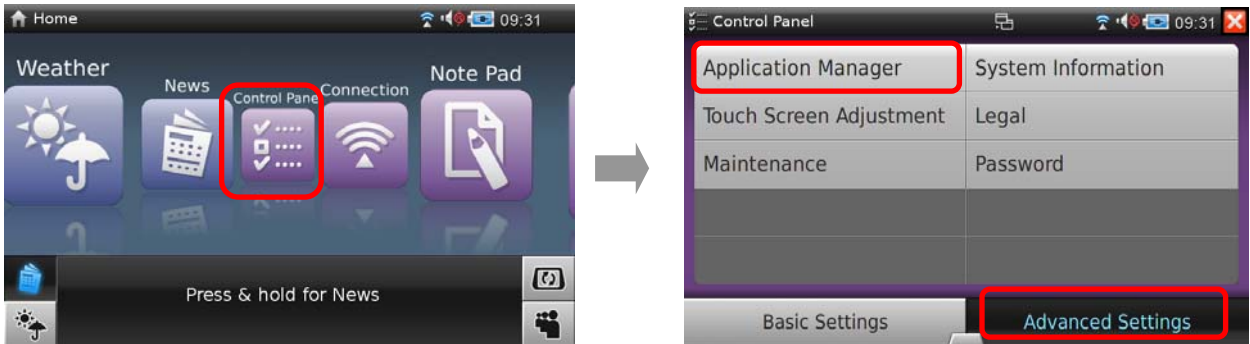
Before starting the installation:

- Plug in the AC adaptor (charger).
- Connect ClarionMiND to a WiFi network.  
\*Please refer to Chapter 3 Connecting to a Network in the Owner's Manual.
- Close all programs that are running.

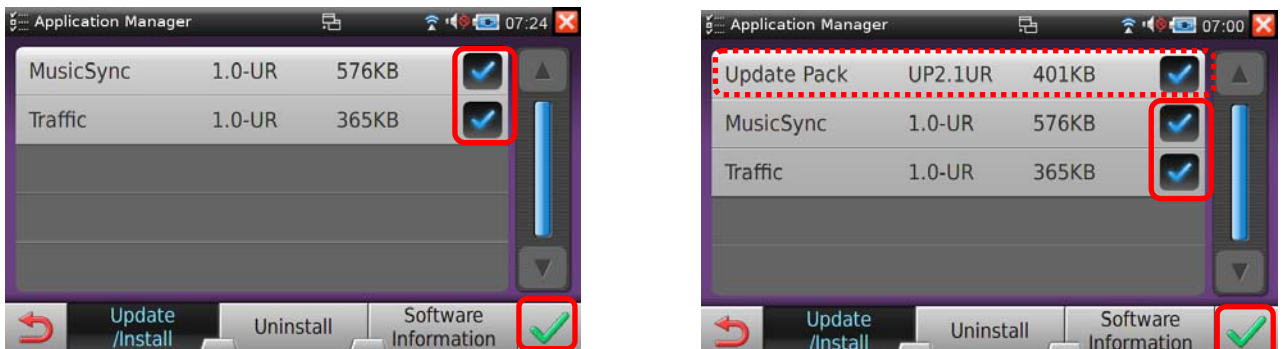
Note :

Verify that you have installed Update Pack version UP2.0UR or later before installing the *Music Sync* and/or *Traffic* application(s). For information on how to install an Update Pack, please refer to instructions at <http://my.clarion.com/en-ca/node/2145> and other ones depending on the versions available then.

1. Tap the Control Panel – Advanced Settings – Application Manger to start Application Manager.



2. On the Application Manager, select the application(s) you want to install, then tap [OK].



\* Even if the Update Pack 2.0UR (UP2.0UR) is installed, you may see another Update Pack at the same time if available.

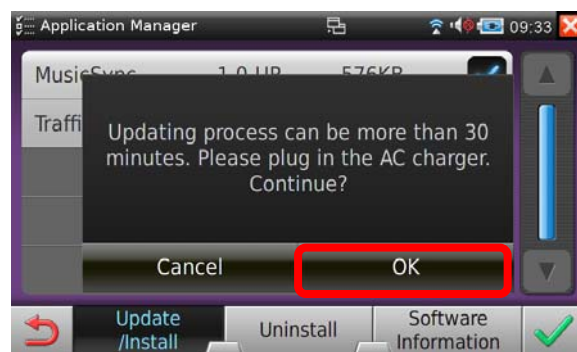
Note :

If no Update Pack is installed, the following screen appears.

In this case, please install the latest and available Update Pack in advance before installing *Music Sync* and *Traffic* application(s). For information on how to install Update Pack, please refer to instructions at <http://my.clarion.com/en-us/node/2145> and other ones depending on the versions available then.

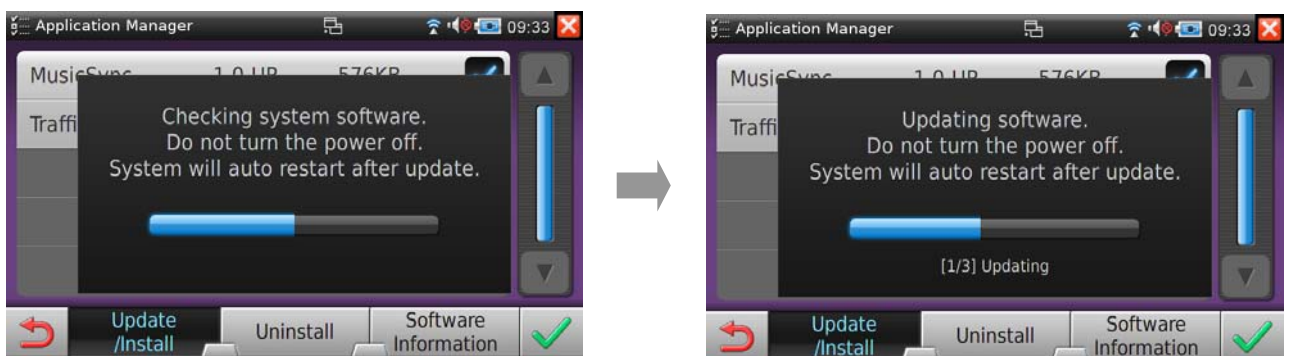


3. Tap [OK] to continue.



\* Updating will take approximately 3 minutes, varying by the speed of internet connection you subscribe and the condition of the connection.

Update will be started. The system will automatically restart after the installation is completed.

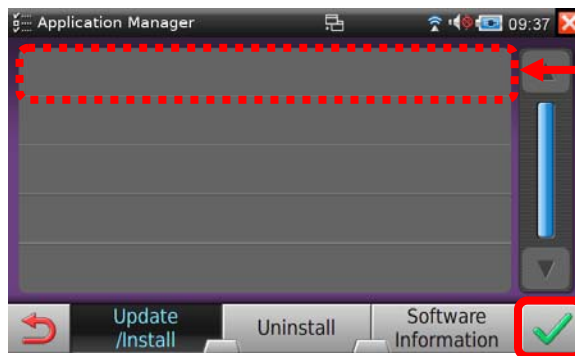
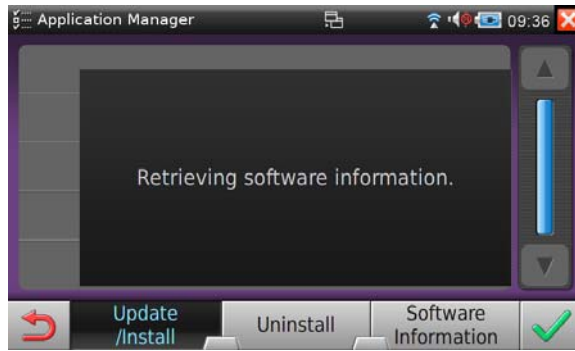


NOTE:

- Please do not turn the power off while updating.

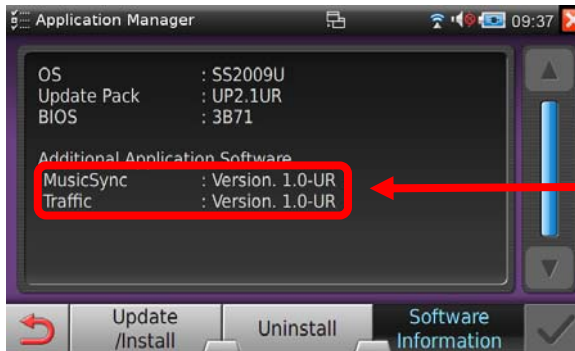
- After the update and the system has restarted the Home Screen will appear. To confirm the update has completed successfully, launch the Application manager located in the Control Panel on the Advanced Settings tab to confirm the version of the application(s) is installed as follows.

Launching Application Manager



Application(s) you installed will not appear here when installation has been completed successfully.

Note:  
The latest Update Pack will appear here if not installed.



The application(s) and the version(s) will appear here when installation has been completed successfully.

\* Version of Software can be also confirmed from Control Panel - Advanced Settings - System information - Software

5. Quit the Application Manager.

**NOTE:**

- The version of the OS, the Update Pack and the additional application(s) can be confirmed from Control Panel – Advanced Settings - System Information - Software.

**Troubleshooting**

- If the software update fails to complete due to a network problem or powers off during the updating process please begin the software update process again.
- If the message "Errors were encountered while downloading packages." appeared and the software update failed to complete, please refer to Owner's Manual chapter 7-12 (Maintenance: Recover RPM database) and then try the update again.