

Software Update: Update Pack 2.1UR (UP2.1UR)

Quick Details

File Name: Update Pack 2.1UR
Date Published: April 22nd, 2009
Download Size: 401KB (UP2.0UR already installed) / 249MB (UP2.0UR not installed)

Overview

Update Pack 2.1UR provides the following improvements from the Update Pack 2.0UR.

	Version Before Change	Version After Change	Changes from Update Pack 2.0UR (UP2.0UR)
Common	-	-	• Corrected GPS data reception after recovery from standby state.
Application Manager	-	-	• Added recovery for a power off occurring during installation of an Update Pack
Portal Sync	-	-	• Application Manager and PortalSync application function improvement

- For further details, please refer to Owner's Manual at <http://my.clarion.com/en-us/html/support>.
- The Update Pack UP2.1UR installs the UP2.0UR update if not already installed on the ClariionMiND. For further details of UP2.0UR, please refer to *Software Update: Update Pack 2.0UR (UP2.0UR)*.
- You cannot uninstall UP2.1UR once you install it.

Software Update Requirements

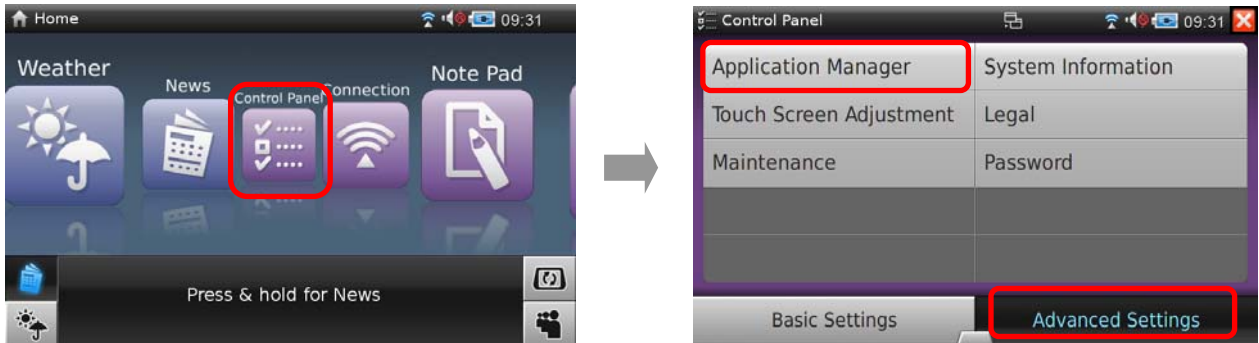
- A Wi-Fi connection is necessary to execute the software update.
- For information on connecting ClarionMiND to Wi-Fi please refer to the Owner's Manual Chapter 3 (Connecting a network).
- User registration/product registration is necessary to use Portal Sync.
- For registration information please refer to the Owner's Manual Chapter 4 (Registering on the Clarion Portal Site).

Instructions

Before starting the installation:

- Plug in the AC adaptor (charger).
- Connect ClarionMiND to a Wi-Fi network.
*Please refer to Chapter 3 (Connecting to a Network) in the Owner's Manual.
- Close all programs that are running.

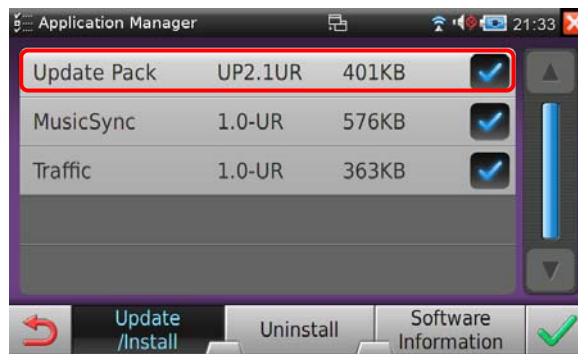
1. Tap the Control Panel – Advanced Settings (Expert Settings) – Application Manger to start Application Manager.



2. There are two different ways of performing the update depending on whether the UP2.0UR update is already installed on the ClarionMiND.

Case 1: UP2.0UR is already installed:

If the following screen is displayed, go to **Step 2.A.**

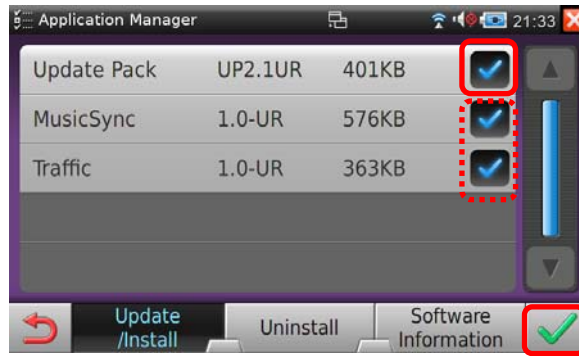


Case 2: UP2.0UR is not installed:

If the following screen is displayed, go to **Step 2.B.**

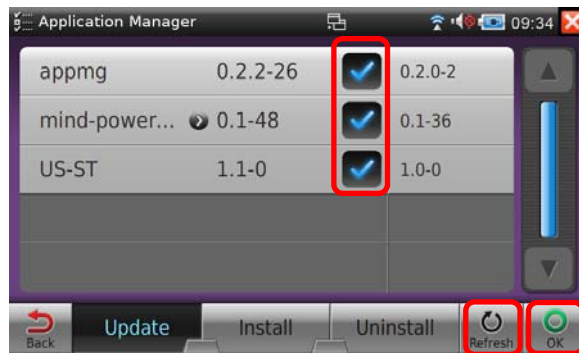


2.A. On the Application Manager, verify that the Update Pack UP2.1UR is selected, then tap [OK].
Go to Step 6.

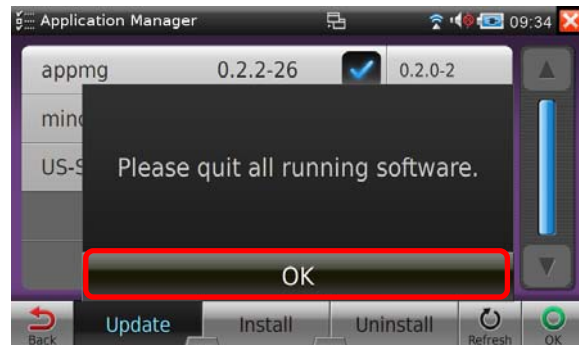


* If you want to install *Music Sync* and/or *Traffic* application(s) at the same time, verify that they are also selected, then tap [OK].

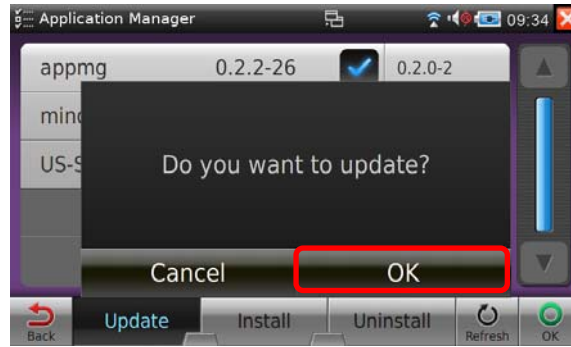
2.B On the Application Manager select the [Update] tab if not already selected. Tap the [Refresh] button and then select each of the software updates. After all files are selected tap [OK].
Go o to Step 3.



3. Tap [OK] after quitting all running software.



4. Tap [OK] to update.

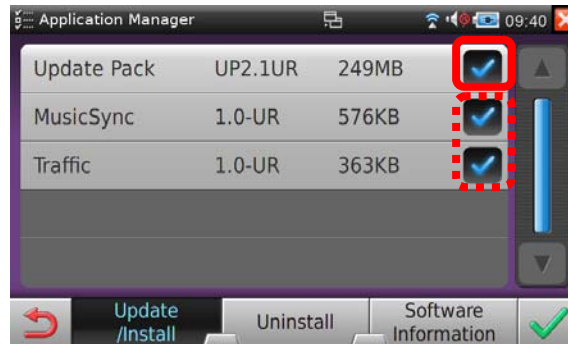


Application Manager update starts. Application Manager will automatically restart after the update is completed.



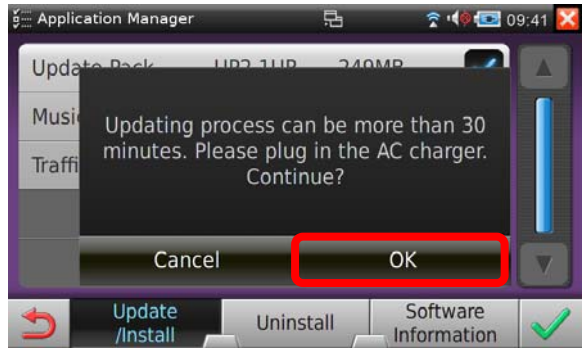
- * Please do not turn the power off during the update.
- * It may take up to 2 minutes to retrieve the software information.

5. After the restart of Application Manager, the [Update/Install] menu is displayed. Verify that the Update Pack UP2.1UR is selected, then tap [OK].



- * If you want to install *Music Sync* and/or *Traffic* application(s) at the same time, verify that they are also selected, then tap [OK].

6. Tap [OK] to continue.



- * Updating process can be more than 30 minutes if the Update Pack UP2.0UR is not installed, varying by the speed of internet connection you subscribe and the condition of the connection.
- * Updating process can be around 3 minutes if the Update Pack UP2.0UR is already installed, varying by the speed of internet connection you subscribe and the condition of the connection.

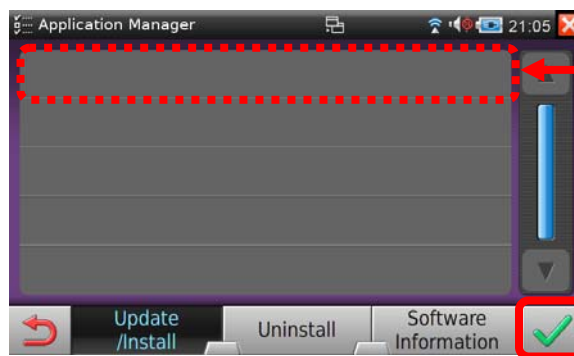
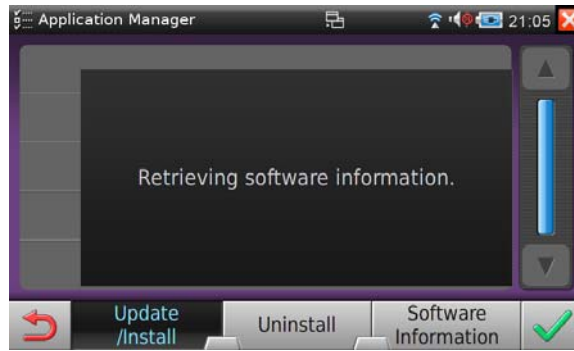
Update will be started. The system will automatically restart after the installation is completed.



- * Please do not turn the power off while updating.
- * The Update Pack(s) includes several large data files. The progress bar may go slowly or sometimes stop while downloading especially in the case where UP2.0UR has not been previously installed.

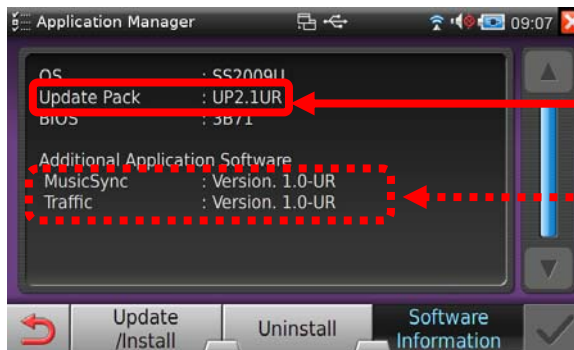
- After the update and the system has restarted the Home Screen will appear. To confirm the update has completed successfully, launch the Application manager located in the Control Panel on Advanced Settings to confirm the version of the Update Pack is installed as follows.

Launching Application Manager



UP2.1UR will not appear here when update has been completed successfully.

Note :
Music Sync and/or Traffic will also appear here, if they are not yet installed.



UP2.1UR will appear here when update has been completed successfully.

Note :
Music Sync and/or Traffic will also appear here when installed.

* Version of Update Pack can be also confirmed from Control Panel - Advanced Settings - System information - Software

8. Quit the Application Manager.

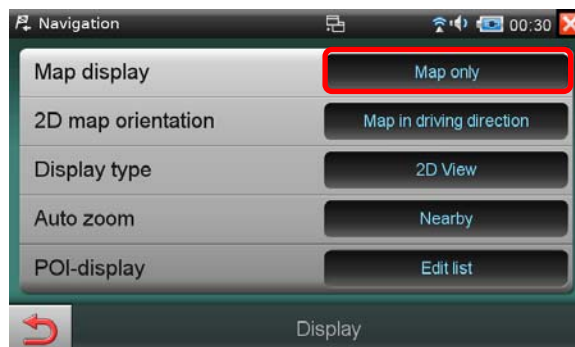
NOTE:

- After the installation of the Update Pack, the date and time may be changed. Date and time may be set manually or set automatically by initiating Portal Sync or setting the “Adjust by GPS Data” setting on the Date and Time screen.
- Please refer to Owner's Manual, chapter 7-3 (Date and Time) for more information about setting the date and time.
- Once the Update Pack is installed it cannot be removed.
- The version of the OS, the Update Pack and the additional applications can be confirmed from Control Panel – Advanced Settings - System Information - Software.
- After the installation of the Update Pack, the Keyboard Selection setting in the Navigation application may be changed into “Cyrillic”. Please change it manually if required to the setting previously used. The Keyboard Selection can be changed from the screen Navigation – Settings – Language Settings. Please refer to the Owner's Manual Chapter 6 (6-4 Language Settings) for the details of Keyboard Selection.



Please change to the setting previously used.

- After the installation of the Update Pack, the icons of the map in the Navigation application may be changed. Please change it manually if required to the setting previously used. The map display can be changed from Navigation – Settings – Display, then change the setting “Change Map display” to “Map Only”. Please refer to the Owner's Manual Chapter 6 (6-6-2 Display) for the details of Display Settings.



Please change to the setting previously used.

Troubleshooting

- If the software update fails to complete due to a network problem or power off during the updating process please begin the software update process again.
- If the message "Errors were encountered while downloading packages." appeared and the software update failed to complete, please refer to Owner's Manual chapter 7-12 (Maintenance: Recover RPM database) and then try the update again.